



Released Items

Student Name: \_\_\_\_\_

Fall 2014  
NC Final Exam  
**Chemistry**



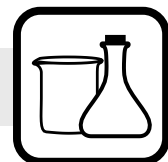
# Student Booklet



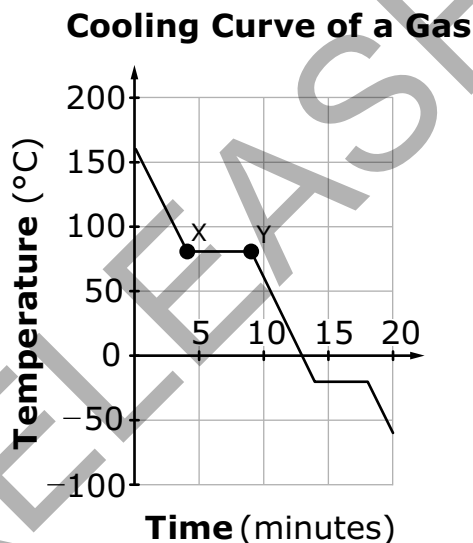
Public Schools of North Carolina  
State Board of Education  
Department of Public Instruction  
Raleigh, North Carolina 27699-6314



- 1 What is the chemical formula for magnesium bromate?
- A MgBr
  - B MgBr<sub>2</sub>
  - C MgBrO<sub>3</sub>
  - D Mg(BrO<sub>3</sub>)<sub>2</sub>
- 2 How are compounds with metallic bonds similar to ionic compounds?
- A Both tend to have double and triple bonds.
  - B Both tend to have low boiling points.
  - C Both tend to have poor conductivity.
  - D Both tend to have high melting points.
- 3 Which of these elements has the greatest atomic radius?
- A H
  - B N
  - C Cl
  - D Cs



- 4 How does the amount of heat energy change as a 250-g sample of water is heated from 5.0°C to 30.0°C?
- A The amount of heat energy increases, causing the water to sublime.
- B The amount of heat energy increases, causing the water to evaporate.
- C As the temperature increases, the amount of heat energy decreases.
- D As the temperature increases, the amount of heat energy increases.
- 5 This graph represents data collected when a sample of a gas is uniformly cooled from 155°C.

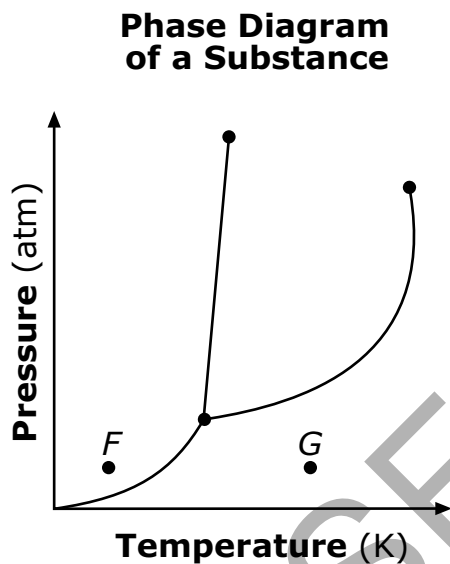


Why does the temperature of the sample remain constant between point X and point Y?

- A because the sample is transitioning from a gaseous state to a solid state
- B because the sample is transitioning from a gaseous state to a liquid state
- C because the sample is transitioning from a solid state to a gaseous state
- D because the sample is transitioning from a liquid state to a solid state



- 6 The phases of a substance under various pressure and temperature combinations are shown on this phase diagram.

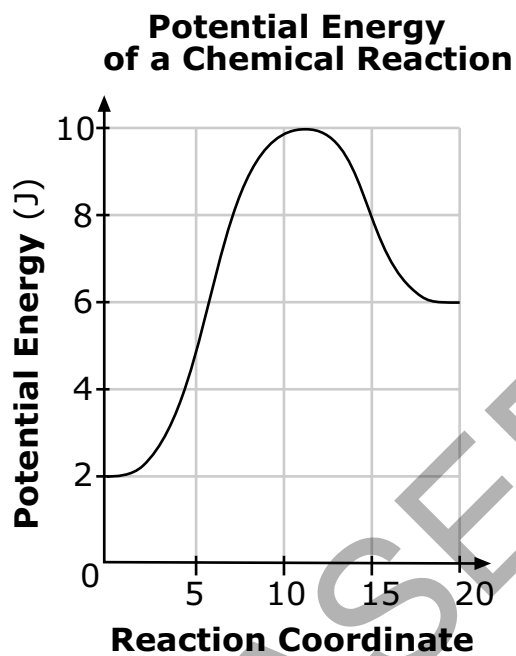


What occurs if the pressure of the substance at point *F* remains constant, and the temperature increases to point *G*?

- A It will transition from a solid state to a liquid state.
- B It will transition from a liquid state to a solid state.
- C It will transition from a solid state to a gaseous state.
- D It will transition from a gaseous state to a solid state.



- 7 The potential energy diagram of a chemical reaction is shown below.

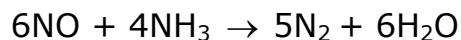


Which **best** describes the energy in the chemical reaction?

- A Heat energy was released.
- B Energy was lowered by a catalyst.
- C 8 J of energy were required to start the reaction.
- D 10 J of energy were required to start the reaction.



- 8 This balanced chemical equation represents a chemical reaction:



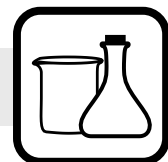
What volume of  $\text{NH}_3$  gas, at Standard Temperature and Pressure (STP), is required to react with 15.0 g of NO?

- A 5.68 L
  - B 7.47 L
  - C 10.0 L
  - D 11.2 L
- 9 The equation represents a chemical reaction at equilibrium.

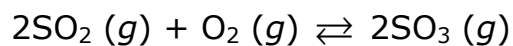


What happens to the system when the temperature is decreased?

- A The reaction shifts toward the right, and the amount of hydrogen gas increases.
- B The reaction shifts toward the right, and the amount of hydrogen gas decreases.
- C The reaction shifts toward the left, and the amount of hydrogen gas increases.
- D The reaction shifts toward the left, and the amount of hydrogen gas decreases.



- 10 This equation represents a chemical reaction at equilibrium:



What will happen when the concentration of  $\text{SO}_3$  is increased?

- A The reaction shifts to the right, and concentrations of  $\text{SO}_2(g)$  and  $\text{O}_2(g)$  decrease.
- B The reaction shifts to the right, and concentrations of  $\text{SO}_2(g)$  and  $\text{O}_2(g)$  increase.
- C The reaction shifts to the left, and concentrations of  $\text{SO}_2(g)$  and  $\text{O}_2(g)$  decrease.
- D The reaction shifts to the left, and concentrations of  $\text{SO}_2(g)$  and  $\text{O}_2(g)$  increase.

RELEASED



- 11 A student conducts an experiment to identify the pH of some common household substances. The data is recorded in this table.

**pH Values for Common Household Substances**

Substance	pH
Ammonia	11.9
Drain Cleaner	13.5
Hand Soap	10.1
Lemon Juice	2.3
Vinegar	3.0
Water	6.8

Which substance would be classified as containing the highest concentration of hydroxide ions?

- A Ammonia  
B Drain Cleaner  
C Lemon Juice  
D Vinegar
- 12 A newly synthesized ionic compound is placed in water to make an aqueous solution. Which **best** describes the new ionic solution?
- A The ionic solution conducts electricity.  
B The ionic solution dissolves nonpolar solutions.  
C The ionic solution cannot conduct electricity.  
D The ionic solution is a neutral solution.



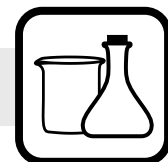


- 13 Why is potassium chloride able to dissolve in water?
- A because potassium ions are attracted to the partial negative charge of hydrogen
  - B because potassium ions are attracted to the partial positive charge of hydrogen
  - C because potassium ions are attracted to the partial negative charge of oxygen
  - D because potassium ions are attracted to the partial positive charge of oxygen
- 14 Which occurs if an electron transitions from  $n = 5$  to  $n = 2$  in a hydrogen atom?
- A Energy is absorbed, and visible light is emitted.
  - B Energy is released, and visible light is emitted.
  - C Energy is released, and visible light is not emitted.
  - D Energy is absorbed, and visible light is not emitted.
- 15 When a gamma ray is emitted by an element, what happens to the atomic mass and the atomic number?
- A The atomic mass stays the same, and the atomic number stays the same.
  - B The atomic mass changes, and the atomic number stays the same.
  - C The atomic mass stays the same, and the atomic number changes.
  - D The atomic mass changes, and the atomic number changes.



- 16 How does a single covalent bond between two carbon atoms compare to a double covalent bond between two carbon atoms?
- A A single covalent bond is stronger and has a longer bond length than a double covalent bond.
  - B A single covalent bond is stronger and has a shorter bond length than a double covalent bond.
  - C A single covalent bond is weaker and has a shorter bond length than a double covalent bond.
  - D A single covalent bond is weaker and has a longer bond length than a double covalent bond.

RELEASED



**This is the end of the Chemistry Released Items.**

**Directions:**

- 1. Look back over your answers for the test questions.**
- 2. Make sure all your answers are entered on the answer sheet. Only what is entered on your answer sheet will be scored.**
- 3. Put all of your papers inside your test book and close the test book.**
- 4. Place your calculator on top of the test book.**
- 5. Stay quietly in your seat until your teacher tells you that testing is finished.**
- 6. Remember, teachers are not allowed to discuss items from the test with you, and you are not allowed to discuss with others any of the test questions or information contained within the test.**

RELEASED



**Chemistry**  
**RELEASED Items<sup>1</sup>**  
**Fall 2014**  
**Answer Key**

Item Number	Type <sup>2</sup>	Key	Percent Correct <sup>3</sup>	Standard
1	MC	D	59%	Chm.1.2.4
2	MC	D	65%	Chm.1.2.5
3	MC	D	73%	Chm.1.3.2
4	MC	D	65%	Chm.2.1.2
5	MC	B	82%	Chm.2.1.2
6	MC	C	56%	Chm.2.1.3
7	MC	C	20%	Chm.2.2.1
8	MC	B	48%	Chm.2.2.4
9	MC	A	34%	Chm.3.1.3
10	MC	D	45%	Chm.3.1.3
11	MC	B	53%	Chm.3.2.1
12	MC	A	48%	Chm.3.2.4
13	MC	C	56%	Chm.3.2.6
14	MC	B	67%	Chm.1.1.3
15	MC	A	32%	Chm.1.1.4
16	MC	D	52%	Chm.1.2.1



## Standard Descriptions

Only clarifying objective descriptions addressed by the released items in this booklet are listed below. A complete list of the North Carolina Essential Standards for Science and Social studies may be reviewed at <http://www.ncpublicschools.org/acre/standards/new-standards/>.

### Chm.1.1.3

Explain the emission of electromagnetic radiation in spectral form in terms of the Bohr model.

### Chm.1.1.4

Explain the process of radioactive decay by the use of nuclear equations and half-life.

### Chm.1.2.1

Compare (qualitatively) the relative strengths of ionic, covalent, and metallic bonds.

### Chm.1.2.4

Interpret the name and formula of compounds using IUPAC convention.

### Chm.1.2.5

Compare the properties of ionic, covalent, metallic, and network compounds.

### Chm.1.3.2

Infer the physical properties (atomic radius, metallic and nonmetallic characteristics) of an element based on its position on the Periodic Table.

### Chm.2.1.2

Explain heating and cooling curves (heat of fusion, heat of vaporization, heat, melting point, and boiling point).

### Chm.2.1.3

Interpret the data presented in phase diagrams.

### Chm.2.2.1

Understand the energy content of a chemical reaction.

### Chm.2.2.4

Analyze the stoichiometric relationships inherent in a chemical reaction.

### Chm.3.1.3

Infer the shift in equilibrium when a stress is applied to a chemical system (Le Chatelier's Principle).

### Chm.3.2.1

Classify substances using the hydronium and hydroxide ion concentrations.

### Chm.3.2.4

Summarize the properties of solutions.

### Chm.3.2.6

Explain the solution process.



<sup>1</sup>These released items were administered to students during a previous test administration. This sample set of released items may not reflect the breadth of the standards assessed and/or the range of item difficulty found on the NC Final Exam. Additional items may be reviewed at <http://www.ncpublicschools.org/accountability/common-exams/released-forms/>. Additional information about the NC Final Exam is available in the *Assessment Specification* for each exam located at <http://www.ncpublicschools.org/accountability/common-exams/specifications/>.

<sup>2</sup>This NC Final Exam contains only multiple-choice (MC) items.

<sup>3</sup>Percent correct is the percentage of students who answered the item correctly during the Spring 2014 administration.

RELEASED